

## **WARNING!!**

The attached Gold Medal Manual is for reference only and is not intended for any other purpose. The information contained in these on line manuals is subject to change at any time. Improvements are always being made to Gold Medal equipment and this information may not be the latest available for your purposes. It is critical that you call Gold Medal Products technical service department at 1-800-543-0862 for any questions about machine operations, replacement parts, or any service questions. Neither Gold Medal nor Snappy Popcorn represent that these on line manuals contain the most current information available for the product represented.

# Super & Special 88


Part No. 49555  
Revised January 1998


**INSTRUCTION MANUAL**  
Models #2388, #2388CL and #2488





 **GOLD MEDAL**<sup>®</sup>  
**FUNFOOD EQUIPMENT & SUPPLIES**  
CINCINNATI, OH 45241-4087 USA


# SAFETY PRECAUTIONS

	<b>⚠ CAUTION</b>
	<p>This equipment is designed and sold for commercial use only. This equipment is not to be used by the consumer in home use. Do not allow direct contact of this equipment by the public when used in food service locations. Only personnel trained and experienced in the equipment operation may operate this equipment. Carefully read all installation instructions before operating the equipment.</p>

	<b>⚠ WARNING</b>
	<p>Always wear safety glasses when servicing this equipment.</p>

	<b>⚠ WARNING</b>
	<p>To avoid serious burns, do NOT touch the kettle while it is hot.</p>

	<b>⚠ WARNING</b>
	<p>Any alterations to this equipment will void the warranty and may cause a dangerous situation. NEVER make alterations to the equipment. Make sure all machine switches are in the OFF position before plugging the equipment into a receptacle.</p>

	<b>⚠ DANGER</b>
	<p>Machine must be properly grounded to prevent electrical shock to personnel. Do NOT immerse the kettle, warmer, or any other part of this equipment in water. Always unplug the equipment before cleaning or servicing.</p>

## NOTE

The information, specifications and illustrations contained in this manual represent the latest data available at time of publication. Right is reserved to make changes as required at the discretion of Gold Medal Products Company without notice.

## **INSTALLATION**

Your new popcorn machine comes completely assembled with the exception of knobs and rubber feet. Remove all packing material and tape before starting operation.

### **ELECTRICAL REQUIREMENTS**

Standard voltage for all models is 120 Volt, 60 Hz, single phase AC.

### **CONTROLS**

There are three switches on the popper.

#### **LIGHT AND WARMER SWITCH**

Turns on heat to bottom corn pan and light.

#### **KETTLE MOTOR SWITCH**

Turns on motor which drives kettle agitator shaft.

#### **KETTLE HEAT SWITCH**

Turns on heat element.

## **POPPING INSTRUCTIONS**

1. Turn kettle heat and kettle motor switch "ON."
2. Make test pop with 3 kernels of corn and 30ml of oil.
3. Load pre-measured popcorn and oil pouch into kettle.
4. When corn has finished popping, dump kettle.
5. Repeat cycle starting with #3; always pop 3–5 batches for best popcorn.

### **AMOUNT OF POPCORN AND OIL**

Your new popper is equipped with a 178ml corn measure cup. Popcorn popped in coconut oil stays fresher longer. Coconut oil does not leave black deposits in your kettle like other oils.

Corn charge — 237ml (8 ounces)

Oil charge — 60ml (2 ounces)




Flavacol — 8cc (1 tablespoon)

## **CARE AND CLEANING**

Each time you finish popping, wipe the outside of the kettle with a soft cloth to remove any oil drippage. (Be careful kettle is extremely hot.) Do not let oil burn on. After you finish popping for the day, allow kettle to cool until it is not too hot to handle, but still warm. Unplug kettle and remove it from the machine. With a cloth, wipe the inside of the kettle, kettle lid, crossbar, outside and underneath of the kettle. Never immerse any portion of the kettle in water. Never flood cabinet with water during cleaning.

Cleaning the cabinet of your machine is easy. Take a clean cloth and wipe excess grease from glass. Also wipe the outside of the machine.

## MAINTENANCE INSTRUCTIONS

	<b>⚠ CAUTION</b>
	<p>THE FOLLOWING SECTIONS OF THIS MANUAL ARE INTENDED ONLY FOR QUALIFIED SERVICE PERSONNEL WHO ARE FAMILIAR WITH ELECTRICAL EQUIPMENT. THESE ARE NOT INTENDED FOR THE OPERATOR.</p>
	<b>⚠ WARNING</b>
	<p>Adequate eye protection must be used when servicing this equipment to prevent the possibility of injury.</p>
	<b>⚠ DANGER</b>
	<p>Do NOT immerse the kettle, warmer, or any other part of this equipment in water. Unplug your machine before servicing.</p>

### ACCESSORIES

49026	Shipping Carton
47147	Corn Measure Cup
47145	A-scoop
47678	Flavacol Cup
47660	Popper Cleaning Towel

## ORDERING SPARE PARTS

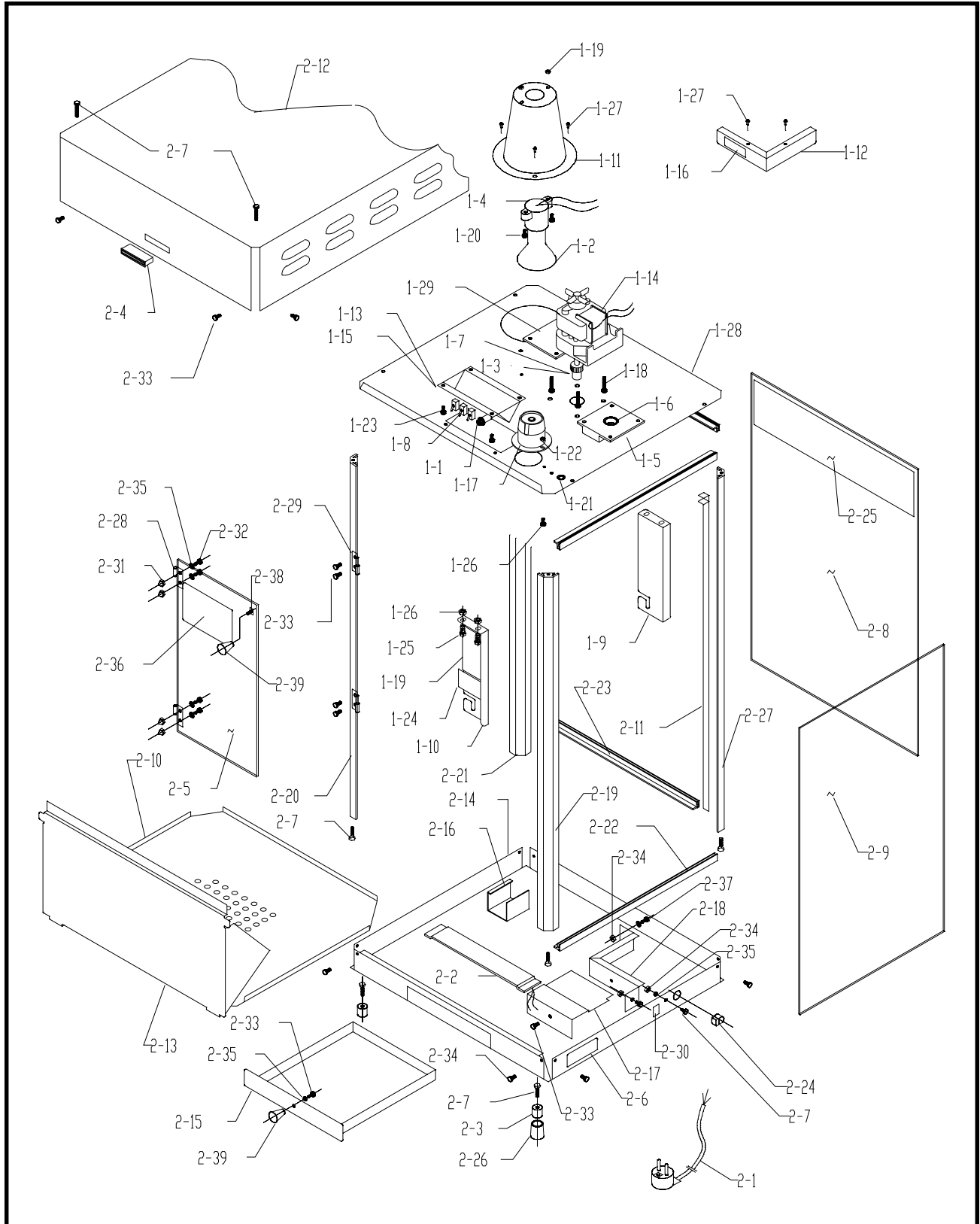
1. Identify the desired part by checking it against the photos, illustrations, and/or the parts list.
2. When ordering, please include part number, part name, and quantity desired.
3. Please include your model name and machine serial number (located on the machine name-plate) with your order.
4. Address all parts orders to:

**Parts Department**  
**Gold Medal Products Co.**  
**10700 Medallion Drive**  
**Cincinnati, Ohio 45241-4807**

or, place orders at:

**(513) 769-7676**  
**Fax: (513) 769-8500**  
**E-mail: goldme19@eos.net**

# CABINET ASSEMBLY



## PARTS LIST – HANGER ASSEMBLY

Models #2388 & #2388CL Model #2488			
Item No.	Part No.	Part No.	Description
1-0	49336	61051	Complete Hanger Assembly
1-1	41033	41033	Red Pilot Light, 125V
1-2	41671	41671	Reflector, Flood Light
1-3	41742	41742	Set Screw, #10-32 x $\frac{3}{16}$ "
1-4	47047	47047	Lamp Holder
1-5	47065	47065	Gear Box w/ Bushing
1-6	47058	47058	Flange Bushing
1-7	47059	47059	Spur Gear
1-8	47201	47201	Switch
1-9	49010	61049	Front Hanger Arm
1-10	49009	61050	Rear Hanger Arm
1-11	49480	49480	Light Shield
1-12	47799	47799	Light Shield Angle
1-13	49099	49099	Switch Box
1-14	47038	47038	Kettle Drive Motor, 120V
1-15	49116	49116	Label, Switches
1-16	41452	41152	Warning, Max Lamp, 75W
1-17	49330	49330	Receptacle
1-18	41314	n/a	Screw, 10-24 x $\frac{3}{4}$ " Hx. Hd.
1-19	74146	n/a	#8-32 Hex Nut Eslok
1-20	89125	89125	#8-32 x $\frac{3}{4}$ " Hex Head
1-21	74150	74150	#8 Washer Internal Tooth
1-22	74149	74149	#8-32 Hex Nut
1-23	74141	74141	#8-32 x $\frac{3}{8}$ " Pan Head Phillips
1-24	87087	87087	Label, Caution Hot
1-25	14821	n/a	Bolt, $\frac{1}{4}$ -20 x $\frac{1}{2}$ " Hex Hd
1-26	74133	74133	$\frac{1}{4}$ -20 Hex Nut
1-27	47004	47004	Pop Rivet, Closed End
1-28	49331	61041	Motor Plate
1-29	49484	49484	Motor Spacer
 PARTS NOT SHOWN			
	49341	49341	Black Wire Assembly (9 $\frac{1}{2}$ " Long) $\frac{1}{4}$ " Faston Piggyback
	49342	49342	White Wire Assembly (9 $\frac{1}{2}$ " Long) $\frac{1}{4}$ " Faston #14-10 AWG
	49343	49343	Green/Yellow Wire Assembly (5" Long) #10 x #12-10 Ring Terminal
	82349	82349	#18 AWG Black Wire Assembly (6" Long) $\frac{1}{4}$ " Faston #18-14 AWG

## PARTS LIST – CABINET ASSEMBLY

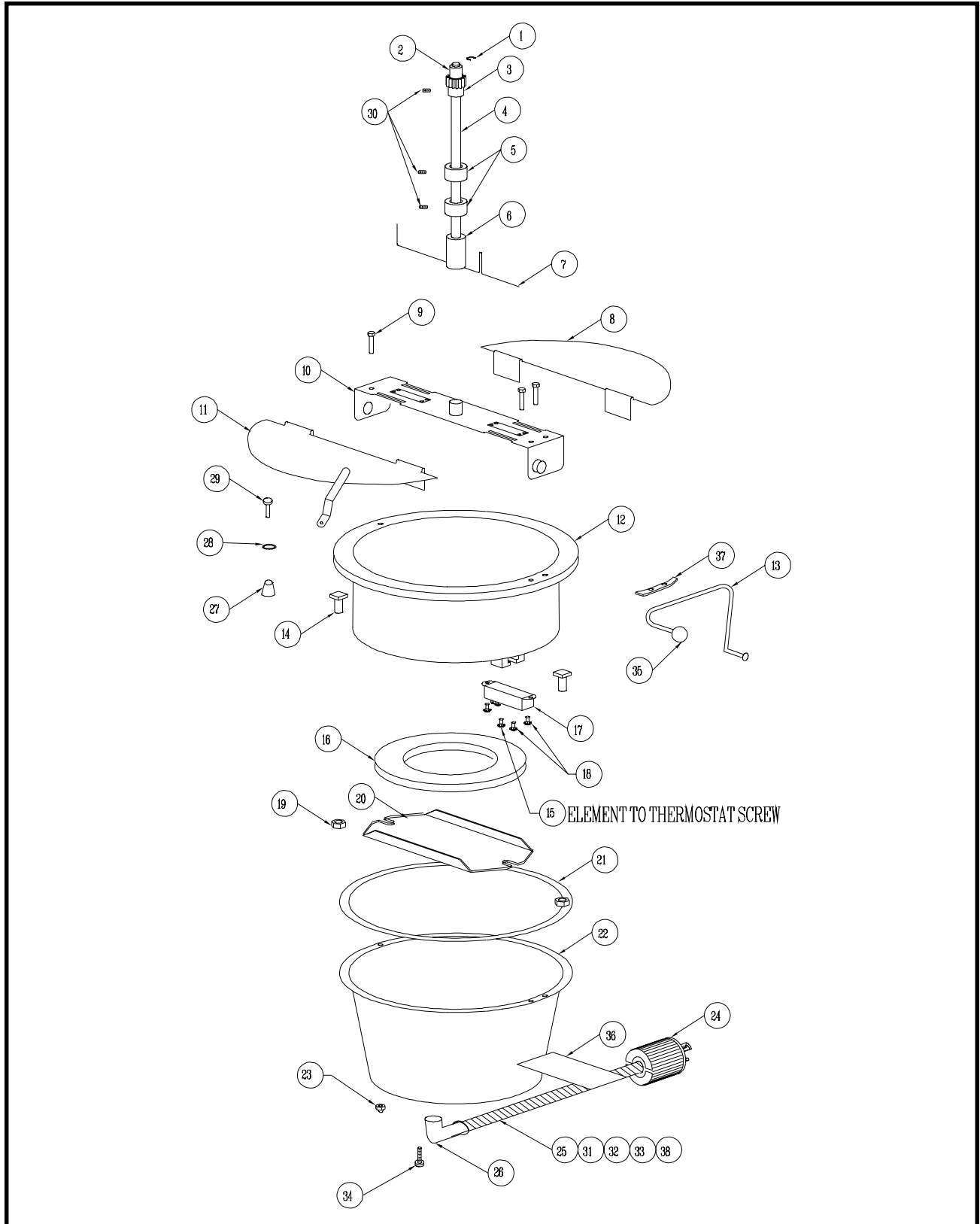
Item No.	Model #2388 Part No.	Model #2388CL Part No.	Model #2488 Part No.	Description
2-0	49545	49546	61032	Complete Cabinet Assembly
2-1	22038	22038	22038	Lead-in Cord
2-2	49440	49440	40031	Heat Element, 50 Watt
2-3	47328	47328	87179	Glide Delrin Foot
2-4	47561	47561	47561	Magnetic Catch
2-5	49591	49591	61033	Door
2-6	76097	76097	76097	Label, "Unplug To Clean"
2-7	49052	49052	n/a	Screw w/ Washer, Taptite
2-8	49519	49519	61034	Front Glass (1/8" x 16 15/16" x 22 3/8")
2-9	49518	49518	61035	Side Glass (1/8" x 14 15/16" x 22 3/8")
2-10	49506	49506	49211	Bottom Corn Pan
2-11	49051	49091	n/a	Wire Duct
2-12	49452	49538	49456	Top Pan
2-13	49145	49145	49210	Drop Panel
2-14	49157	49539	n/a	Bottom Pan
2-15	49100	49100	49100	Old Maid Pan
2-16	49425	49425	49103	Strip Heater Bracket
2-17	49104	49104	n/a	Cover, Corner Cover
2-18	49105	49105	n/a	Corner Cover
2-19	49514	49514	61045	Right Rear Corner Post
2-20	49513	49513	61046	Left Rear Corner Post
2-21	49516	49516	61044	Left Front Corner Post
2-22	49508	49508	n/a	Side Extrusion
2-23	74164	74164	n/a	Front Extrusion
2-24	76026	76026	n/a	Strain Relief, #SR-6P3-4
2-25	49158	49158	49158	Decal, Front Glass
2-26	49123	49123	49123	Crutch Tip
2-27	49515	49515	61044	Right Front Corner Post
2-28	74169	74169	41351	Left Female Hinge
2-29	49349	49349	41349	Left Male Hinge
	74168	74168	41352	Right Female Hinge
	41350	41350	41350	Right Male Hinge
2-30	76135	76135	76135	Tag, Power Cord
2-31	47702	47702	47702	#8-32 Acorn Nut
2-32	74142	74142	74142	#8-32 x 1/4" Pan Head Phillips
2-33	74141	74141	74141	#8-32 x 3/8" Pan Head Phillips
2-34	74149	74149	74149	#8-32 Hex Nut
2-35	74150	74150	74150	#8 Internal Tooth Washer
2-36	47663	47663	47663	Label, "6 Steps To Pop"
2-37	74141	74141	74141	Screw #8-32 x 3/8" Brown
2-38	75267	75267	75267	Tee Bolt
2-39	47120	47120	47120	Knob



## PARTS LIST – CABINET ASSEMBLY

Item No.	Model #2388 Part No.	Model #2388CL Part No.	Model #2488 Part No.	Description
PARTS NOT SHOWN				
	46617	46617	n/a	#18 Ga. TEW Wire, Red (45" Long)
	46619	46619	n/a	#18 Ga. TEW Wire, Green (45" Long)
	49117	49117	n/a	#16 Ga. TEW Wire, White (45" Long)
	49118	49118	n/a	#16 Ga. TEW Wire, Black (45" Long)
	61043	n/a	n/a	Top Frame Assembly
	49345	n/a	n/a	Bottom Frame Assembly
	77089	n/a	n/a	Mount Bracket Mag. Catch
	76190	n/a	n/a	Screw #10-24 X ¾" Hex
	87149	n/a	n/a	Label, "Disconnect Power"
	49322	n/a	n/a	#10-24 X 1" Hex Hd Ms
	61036	n/a	n/a	Rigid Channel
	49213	n/a	n/a	Rigid Channel
	49214	n/a	n/a	Rigid Channel
	74153	n/a	n/a	Screw #8-32 X 1" Hex
	61037	n/a	n/a	Rear Glass Retain Strip
	61038	n/a	n/a	Front Glass Retain Strip
	49342	n/a	n/a	White Wire Assembly, ¼" Faston
	49341	n/a	n/a	Black Wire Assembly Piggyback Terminal
	82349	n/a	n/a	Black Wire Assembly, ¼" Faston
	49343	n/a	n/a	Green/Yellow Wire Assembly Ring Terminal

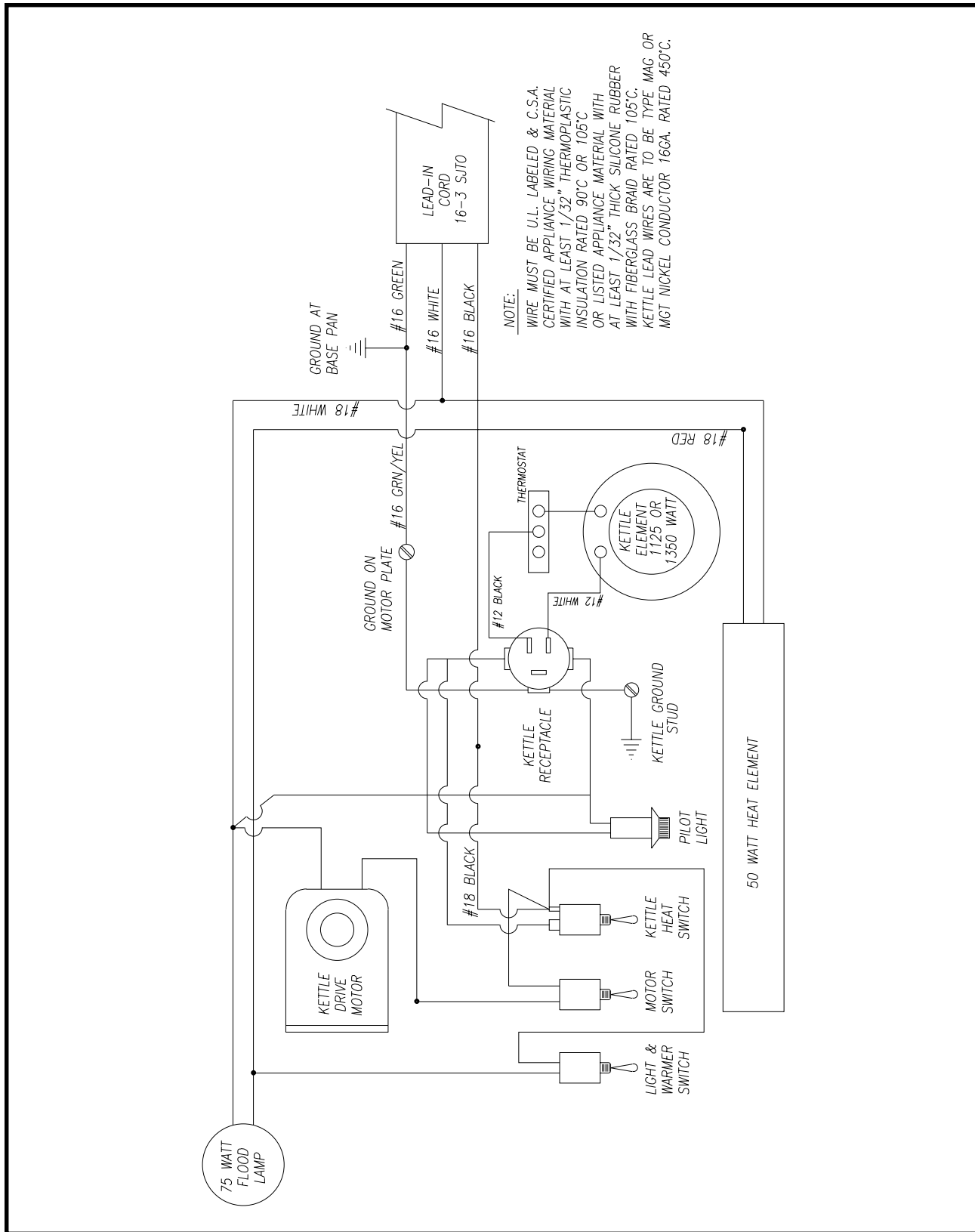
# KETTLE ASSEMBLY



## PARTS LIST – KETTLE ASSEMBLY

Item No.	Model #2388	Model #2388CL	Model #2488	Description
	Part No.	Part No.	Part No.	
	49548	49548	61054	8 Oz. Kettle Complete
	49550	49550	61055	8 Oz. Lid & Agitator Assembly
	49545	49549	61057	8 Oz. Kettle Bottom Only, 120 Volt
1	47107	47107	47107	C-Ring
2	47106	47106	47106	Needle Bearing
3	47059	47059	47059	Spur Gear
4	49437	49437	49577	Agitator Shaft Assembly
5	46649	46649	47326	Set Collar
6	49013	49013	49013	Agitator Weight
7	49011	49011	49011	Stir Rod
8	49016	49016	47119	Rear Kettle Lid
9	89125	89125	89125	Screw, #8-32 x 3/4" Hex Hd.
10	49553	49553	61010	Crossbar Assembly
11	49017	49017	47261	Front Lid with Lifter
12	49527	49527	61019	Kettle Welded Assembly
13	49025	49025	49571	Dump Handle
14	49446	49446	49446	Bolt, 5/16-18 x 5/8" Square Hd.
15	47466	47466	n/a	Screw, #6-32 x 3/8" St. Stl.
16	49529	49529	47081	Heat Element, 120V, 1125W
17	47676	47676	47676	Thermostat Kettle
18	49136	49136	49136	Screw, #6-32 x 3/16" Pan Hd. Ms.
19	49317	49317	49317	5/16-18 Serrated Lock Nut
20	49547	49547	49310	Retainer, Tubular Element
21	49368	49368	61012	Kettle Gasket
22	49522	49522	61017	Kettle Shell
23	47702	47702	n/a	Acorn Nut, #8-32
24	49329	49329	47915	Kettle Plug
25	77079-16	77079-16	82107-24	Flexible Conduit
26	46241	46241	46241	90 Degree Connector
	49328	49328	49490	Kettle Lead-in Cord Assembly
27	47120	47120	47120	Knob, Lid Lifter
28	74150	74150	74150	#8 Lock Washer
29	87210	87210	87210	Screw, #8-32 x 3/8"
30	41742	41742	n/a	Set Screw, #10-32 x 3/16"
31	49086	49086	n/a	Red Kettle Wire Assembly
32	49087	49087	n/a	White Kettle Wire Assembly
33	49159	49159	n/a	Green Kettle Wire Assembly
34	49177	49177	49177	Screw, #8-32 x 3/4" Hex Head
35	47110	47110	47110	Knob, Dump Handle
36	49350	49350	n/a	Caution Label
37	49362	49362	n/a	Dump Handle Spacer
38	77080	77080	n/a	Bushing, Conduit
	n/a	n/a	61053	Kettle Wire Lead Assembly
	n/a	n/a	47708	Black Kettle Wire Assembly
	n/a	n/a	47709	White Kettle Wire Assembly
	n/a	n/a	47710	Green Kettle Wire Assembly
	n/a	n/a	82135	Bushing, Conduit

# ELECTRICAL SCHEMATIC



# WARRANTY

WE WARRANT to the original purchaser the Gold Medal equipment sold by us to be free from defects in material or workmanship under normal use and service. Our obligation under this warranty shall be limited to the repair or replacement of any defective part for a period of six (6) months from the date of sale to the Original Purchaser with regard to labor and two (2) years with regard to parts and does not cover damage to the equipment caused by accident, alteration, improper use, voltage, abuse, or failure to follow instructions.

THIS WARRANTY IS IN LIEU OF ALL OTHER WARRANTIES EXPRESSED OR IMPLIED, AND OF ALL OTHER OBLIGATIONS OR LIABILITIES ON OUR PART, INCLUDING THE IMPLIED WARRANTY OF MERCHANTABILITY. THERE ARE NO WARRANTIES WHICH EXTEND BEYOND THE DESCRIPTION ON THE FACE HEREOF. We neither assume, nor authorize any other person to assume for us, any other obligation or liability in connection with the sale of said GOLD MEDAL equipment or any part thereof.

The term "Original Purchaser" as used in this warranty shall be deemed to mean that person, firm, association, or corporation who was billed by the GOLD MEDAL PRODUCTS COMPANY, or their authorized distributor for the equipment.

THIS WARRANTY HAS NO EFFECT AND IS VOID UNLESS THE ORIGINAL PURCHASER FIRST CALLS GOLD MEDAL PRODUCTS COMPANY AT 1-800-428-2676 TO DISCUSS WITH OUR SERVICE REPRESENTATIVE THE EQUIPMENT PROBLEM, AND, IF NECESSARY, FOR INSTRUCTIONS CONCERNING THE REPAIR OR REPLACEMENT OF PARTS.

*NOTE: This equipment is manufactured and sold for commercial use only.*



**GOLD MEDAL PRODUCTS COMPANY**  
**10700 Medallion Drive**  
**Cincinnati, OH 45241-4807 USA**